

HECH®

STAR EDITION

LONGREE

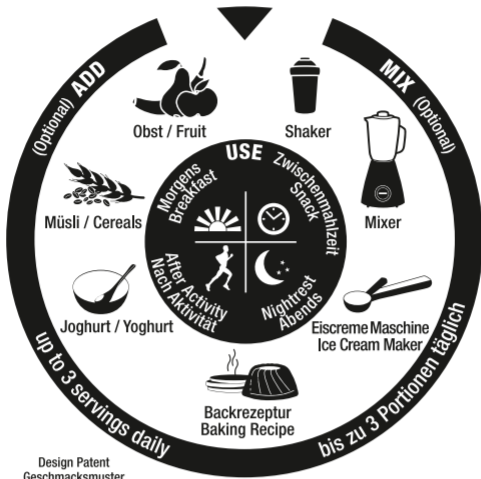
MAX'S COMPLEX CASEIN PROTEIN

VERZEHREMPFEHLUNG / RECOMMENDED CONSUMPTION

25 g Pulver / Powder
ca. 2-3 gestrichene Messlöffel
approx. 2-3 level measuring spoons

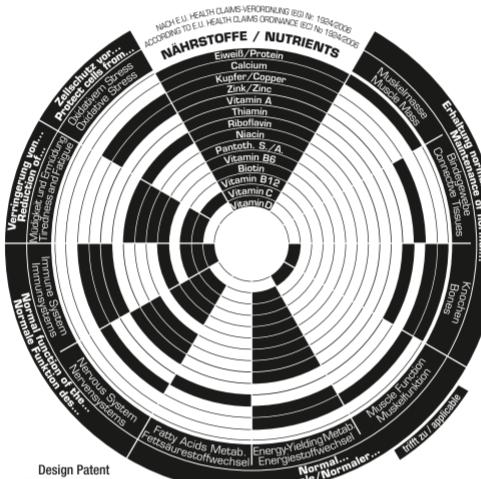


250 ml
Wasser / Milch
Water / Milk



GESUNDHEITSBEZOGENE AUSSAGEN (E.U.) / HEALTH CLAIMS (E.U.)

Eiweiß, Vitamine & Mineralstoffe leisten folgenden Beitrag für die Gesundheit:
Protein, Vitamins & Minerals contribute the following benefits to health:



NÄHRWERTE / NUTRITION INFORMATION

Portionen pro Packung ca.: 20 / Servings Per Container approx.: 20

pro/per	100 g	Portion ¹
Energie/Energy	1.527 kJ (360 kcal)	382 kJ (90 kcal)
Fett/Fat	1,8 g	0,4 g
- davon gesättigte Fettsäuren/ of which Saturated	1,1 g	0,3 g
Kohlenhydrate/Carbohydrate	4,8 g	1,2 g
- davon Zucker/of which Sugars	2,7 g	0,7 g
Eiweiß/Protein	80 g	20 g
Salz/Salt	0,36 g	0,09 g

VITAMINE / VITAMINS

pro/per	100 g (NRV ²)	Portion ¹ (NRV ²)
Vitamin A (RE)	1.600 µg (200%)	400 µg (50%)
Vitamin D	10 µg (200%)	2,5 µg (50%)
Vitamin E (TE)	24 mg (200%)	6,0 mg (50%)
Vitamin C	160 mg (200%)	40 mg (50%)
Thiamin	2,2 mg (200%)	0,55 mg (50%)
Riboflavin	2,8 mg (200%)	0,70 mg (50%)
Niacin (NE)	32 mg (200%)	8,0 mg (50%)
Vitamin B6	2,8 mg (200%)	0,70 mg (50%)
Folsäure/Folic Acid	400 µg (200%)	100 µg (50%)
Vitamin B12	6,0 µg (240%)	1,5 µg (60%)
Biotin	100 µg (200%)	25 µg (50%)
Pantothensäure/Pantothenic Acid	12 mg (200%)	3,0 mg (50%)

MINERALSTOFFE / MINERALS

pro/per	100 g (NRV ²)	Portion ¹ (NRV ²)
Calcium	1.071 mg (134%)	268 mg (33%)
Phosphor/Phosphorus	667 mg (95%)	167 mg (24%)
Magnesium	442 mg (118%)	110 mg (29%)
Eisen/Iron	28 mg (200%)	7,0 mg (50%)
Zink/Zinc	20 mg (200%)	5,0 mg (50%)
Kupfer/Copper	2,0 mg (200%)	0,50 mg (50%)
Mangan/Manganese	4,0 mg (200%)	1,0 mg (50%)
Selen/Selenium	110 µg (200%)	28 µg (50%)
Jod/Iodine	300 µg (200%)	75 µg (50%)

ZUTATEN (QUANTITATIV) / INGREDIENTS (QUANTITATIVE)

pro/per	100 g	Portion ¹
Papain	70 mg	18 mg
Bromelain	50 mg	13 mg
Actinidin	30 mg	7,5 mg
Laktase/Lactase	25 mg	6,3 mg

1 = 25 g Pulver / Powder + 250 ml Wasser / Water

2 = Nährstoffbezugswerte / Nutrient Reference Values

Es wird eine abwechslungsreiche und ausgewogene Ernährung sowie eine gesunde Lebensweise empfohlen.
A varied and balanced diet and a healthy lifestyle is recommended.

ZUTATEN: MILCHEIWEIß-PULVER (KASEIN) (77%), MOLKENEIWEIß-KONZENTRAT (15%^{V.FY}, 12%^E, 11%^S, 10%^K, 9,4%^{ML}), STARK ENTÖLTES KAKAOPULVER^S (7,0%), ERDBEERSTÜCKE^E (3,0%), KOKOSNUSS-PULVER^K (3,0%), JOGHURT-PULVER (3,0%^{FY}, 1,6%^K, 1,3%^{ML}, 1,2%^E), MANGOSTÜCKE^{ML} (2,5%), MANGO-FRUCHTPULVER^{ML} (2,5%), MAISSTÄRKE^V, MAGNESIUMCARBONAT, AROMA, KOKOSFLOCKEN^K (2,0%), SCHOKOLADEN-RASPELN^S (ZUCKER, KAKAOMASSE, FETTARMES KAKAOPULVER, KAKAOBUTTER, EMULGATOR SOJA-LECITHIN) (1,0%), FÄRBEDES LEBENSMITTEL ROTE BETE PULVER^E (ROTE BETE), SAFTKONZENTRAT, MALTODEXTRIN, VERDICHTUNGSMITTEL XANTHAN, SÄUERUNGSMITTEL CITRONENSÄURE^{E,ML,FY,K}, VANILLESCHOTEN-PULVER^{LO} (0,4%), MALTODEXTRIN^K, SALZ, L-ASCORBINSÄURE, SUBUNGSMITTEL (SUCRALOSE UND SACCHARIN), FRUCHTPULVER HOLONDER^E (MALTODEXTRIN, HOLONDERKONZENTRAT, KÄRAMELLZUCKERSIRUP, SÄUERUNGSMITTEL CITRONENSÄURE, ENZYMPAPAIN (0,07%), EISENDIPHOSPHAT, D-α-TOCOPHERYLACETAT, ENZYMBROMELAIN (0,05%), EMULGATOR SOJA-LECITHIN, NATRIUMCASEINAT^K, ZINKSULFAT, NICOTINAMID, ENZYM ACTINIDIN (0,03%), ENZYMLAKTASE (0,025%), CALCIUM-D-PANTOTHENAT, MANGANSULFAT, FARBSTOFF CAROTIN^{W,ML}, KUPFERCARBONAT, PYRIDOXINHYDROCHLORID, THIAMINMONONITRAT, RETINYLACETAT, RIBOFLAVIN, PTEROYLMONOGLUTAMINSÄURE, KALIUMIODID, NATRIUMSELENIT, TRENNMITTEL SILICIUMDIOXID-VS,E,ML,FY, D-BIOTIN, CHOLECALCIFEROL.

GESCHMACK: V=VANILLE, E=ERDBEERE, S=SCHOKOLADE, ML=MANGO-LASSI, FY=FROZEN YOGURT, K=KOKOS

ALLERGIE-HINWEIS: KANN SPUREN VON GLUTEN UND EI ENTHALTEN./ GESCHMACK SCHOKOLADE: KANN SPUREN VON GLUTEN, EI, ERDNÜSSEN UND SCHALENFRÜCHTEN ENTHALTEN.

INGREDIENTS: MILK PROTEIN POWDER (CASEIN) (77%), WHEY PROTEIN CONCENTRATE (15%^{V.FY}, 12%^E, 11%^S, 10%^K, 9,4%^{ML}), FAT-REDUCED COCOA POWDER^S (7.0%), STRAWBERRY PIECES^E (3.0%), COCONUT POWDER^K (3.0%), YOGHURT POWDER (3.0%^{FY}, 1.6%^K, 1.3%^{ML}, 1.2%^E), MANGO PIECES^{ML} (2.5%), FRUIT POWDER MANGO^{ML} (2.5%), MAIZE STARCH^V, MAGNESIUM CARBONATE, FLAVOUR, COCONUT FLAKES^K (2.0%), CHOCOLATE RASPS^S (SUGAR, COCOA MASS, FAT-REDUCED COCOA POWDER, COCOA BUTTER, EMULSIFIER SOY LECITHIN) (1.0%), COLOURING PLANT EXTRACT BEETROOT^E (BEETROOT JUICE CONCENTRATE, MALTODEXTRIN, THICKENER XANTHAN GUM, ACID CITRIC ACID^{E,ML,FY,K}, VANILLA BEAN POWDER^V (0.4%), MALTODEXTRIN^K, SALT, L-ASCORBIC ACID, SWEETENERS (SUCRALOSE AND SACCHARIN), FRUIT POWDER ELDER^E (MALTODEXTRIN, ELDER CONCENTRATE, CARAMELL SUGAR SYRUP, ACID CITRIC ACID), ENZYME PAPAIN (0.07%), FERRIC DIPHOSPHATE, D-ALPHA-TOCOPHERYL ACETATE, ENZYME BROMELAIN (0.05%), EMULSIFIER SOY-LECITHIN, SODIUM CASEINATE^K, ZINC SULPHATE, NICOTINAMIDE, ENZYME ACTINIDIN (0.03%), ENZYME LACTASE (0.025%), D-PANTOTHENATE-CALCIUM, MANGANESE SULPHATE, COLOURING AGENT PTEROYLMONOGLUTAMIC ACID, POTASSIUM IODIDE, SODIUM SELENITE, ANTI-CAKING AGENT SILICON DIOXIDE^{S,E,ML,FY}, D-BIOTIN, CHOLECALCIFEROL.

FLAVOUR: V=VANILLA, E=STRAWBERRY, S=CHOCOLATE, ML=MANGO-LASSI, FY=FROZEN YOGURT, K=COCONUT

ALLERGY ADVICE: MAY CONTAIN TRACES OF GLUTEN AND EGG. / FLAVOUR CHOCOLATE: MAY CONTAIN TRACES OF GLUTEN, EGG, PEANUTS AND NUTS.

Getränkpulver zur Herstellung eines Proteingetränkes. Mit Süßungsmitteln. / Geschmack Erdbeere und Schokolade: Mit Zucker und Süßungsmitteln. Kühl (max. 21°C) und trocken lagern.

Drink powder to prepare a protein drink. With sweeteners. / Flavour strawberry and chocolate: With sugar and sweeteners. Store cool (max. 70°F) and dry.

500 g e 1.1 lbs

HECH® FUNCTIONAL NUTRITION
12623 BERLIN · MADE IN GERMANY

LONGREE.HECH.COM